

June 6, 2025

Beverly Hills New Water Main Public Outreach

Alexander H. Manjarres, P.E.

Project Engineer I, Sewer & Water Pipelines

Marshall Preas, P.E.

Associate Vice President – Pape Dawson



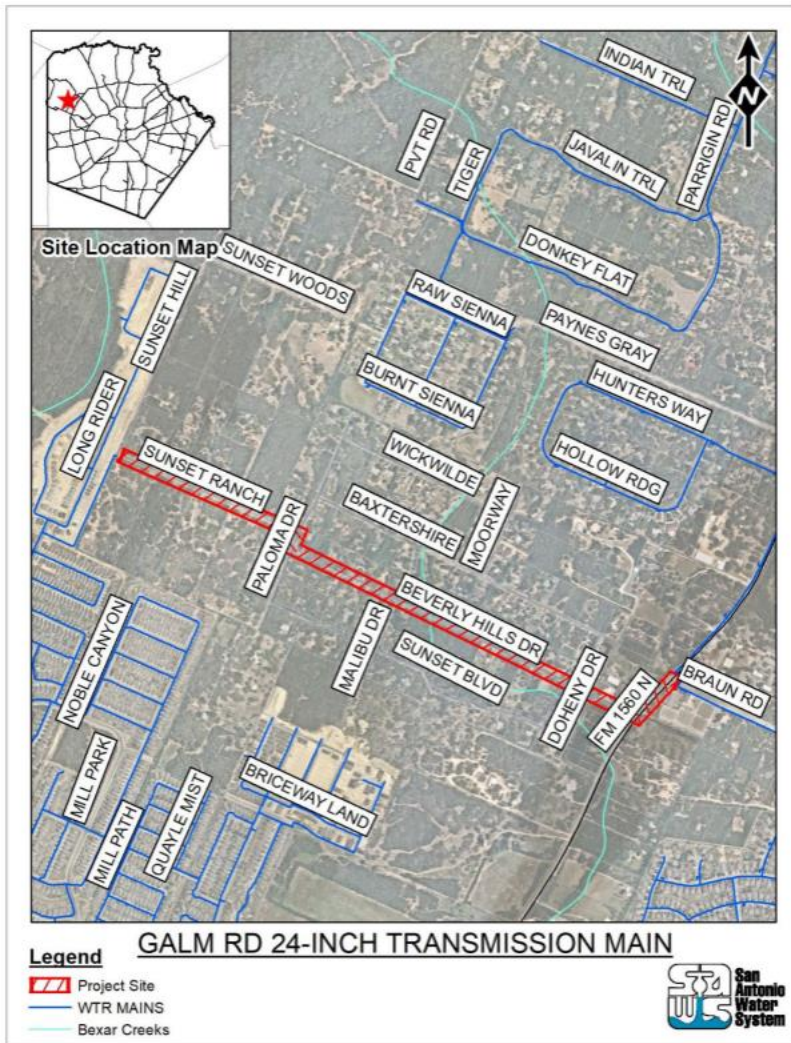
Beverly Hills New Water Main

Presenters

- Alexander H. Manjarres, P.E.
Project Engineer I, San Antonio Water System (SAWS)
- Marshall Preas, P.E.
Associate Vice President, Pape-Dawson - SAWS Consultant

Project Overview

- The project spans approximately 6438 LF between FM 1560 and Sunset Hill
- New water main to connect pressure zones PZ 1170W and PZ 1170
- Alignment will tie in to existing 24" PVC line near the intersection of Sunset Hill and Sunset Ranch. The line will head east following Sunset Ranch through Beverly Hills Drive and tie into a future waterline on FM 1560.



Project Scope

- The project involves Installing 6,438 linear feet of 24” Ductile Iron . Including:
 - Approximately 6,438 LF of open cut trench excavations
 - Approximately 13 fire hydrants
 - 1 water tie-ins
- All work to remain within TxDOT or City of Helotes right-of-way

What to Expect

- Construction Impacts
 - Street trenching for new 24-in water main
 - Contractor will ensure project site is clean
 - Contractor will cover trenches at the end of each working day
 - No impacts to other utilities
- Traffic Impacts
 - Partial street closures
 - Contractor will set up detours, barricades, and traffic control
 - Contractor will allow some through traffic
 - Residents will always have access to their properties

Project Schedule

- SAWS / Contractor to provide project information in October 2025 / November 2025
- Construction Start: Fall 2025
- Construction complete: Fall 2026

Contact Information

- Cecilia Picazo
SAWS Governmental Affairs
Cecilia.Picazo@saws.org / 210-233-3750

Questions?



June 6, 2025

Beverly Hills New Water Main Public Outreach

Alexander H. Manjarres, P.E.

Project Engineer I, Sewer & Water Pipelines

Marshall Preas, P.E.

Associate Vice President – Pape Dawson



Beverly Hills New Water Main